

POPE & YOUNG CLUB

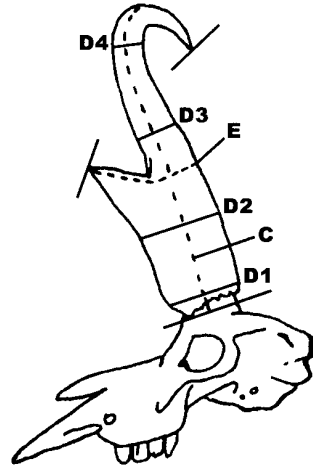
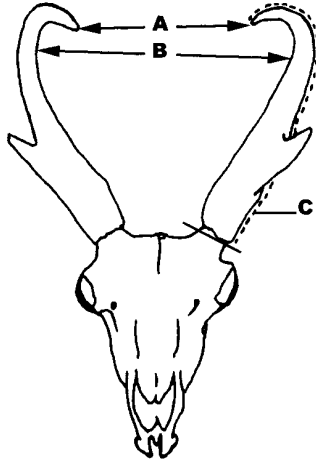


Official Scoring System for Bowhunting North American Big Game

MINIMUM SCORE

67

PRONGHORN ANTELOPE



SEE OTHER SIDE OR INSTRUCTIONS			COLUMN 1	COLUMN 2	COLUMN 3
A. Tip to Tip Spread			Right Horn	Left Horn	Difference
B. Inside Spread					
C. Length of Horn					
D-1. Circumference of Base					
D-2. Circumference at First Quarter (taken BELOW prong)					
(This measurement taken at _____ inches from base)					
D-3. Circumference at Second Quarter (taken ABOVE prong)					
(This measurement taken at _____ inches from base)					
D-4. Circumference at Third Quarter					
(This measurement taken at _____ inches from base)					
TOTALS					
ADD	Column 1	Location of Kill:	(County)		(State/Prov)
	Column 2	Date Killed:	Hunter:		
Subtotal		Owner:	Telephone #: ()		
SUBTRACT Column 3		Owner's Address:			
FINAL SCORE		Guide's Name and Address:			
		Remarks: (Mention Any Abnormalities or Unique Qualities)			

I, _____, certify that I have measured this trophy on _____
 at _____
PRINT NAME MM/DD/YYYY
STREET ADDRESS CITY STATE/PROVINCE ZIP CODE

and that these measurements and data are, to the best of my knowledge and belief, made in accordance with the instructions given.

Witness: _____ Signature: _____
TO MEASURER'S SIGNATURE P&Y OFFICIAL MEASURER

ADDRESS

CITY STATE/PROVINCE ZIP

BRIEF INSTRUCTIONS FOR MEASURING PRONGHORN ANTELOPE

Measurements must be made with a flexible steel tape and recorded to the nearest one-eighth of an inch. To simplify addition, please enter fractional figures in eighths and in proper fractions. Refer to **P & Y Measurer's Manual** for a detailed description of measuring procedures.

- A. Tip to Tip Spread** measured between tip of horns.
- B. Inside Spread of Horns** measured at right angles to the center line of the skull at widest point between horns.
- C. Length of Horn** is measured on the outside curve, as illustrated. The line taken will vary with different heads, depending on the direction of the curvature. Measure along the center of the outer curve, from tip of horn, to a point in line with the lowest edge of the base, using a straight edge to establish the line end.
- D-1. Circumference of Base** is measured at right angles to long axis of the horn. Do not follow irregular edge of horn. The line of measurement must be entirely on horn material.
- D-2-3-4 Circumferences.** Divide measurement of longer horn by four. Measuring from the base, mark BOTH horns at these quarters even though one horn is shorter, and measure circumferences at these marks. Should D-2 land on the swelling of the prong, take D-2 measurement immediately below swelling of prong. Note D-3 must be taken above the prong. If D-3 falls on or below the prong, then take this measurement immediately above the prong. If adjustments for swelling of prong are made to the D-2 or D-3 measurement, note these adjustments in "REMARKS" section.
- E. Length of Prong.** Measure from the tip of the prong, along the upper edge of the outer side to the horn; then, around the horn, to a point at the rear of the horn where a straight edge across the back of both horns touches the horn. This measurement around the horn, from the base of the prong, should be taken at right angles to the long axis of the horn.

ENTRY REQUIREMENTS

- 1. Original scoring form** completed by an Official Measurer of the Pope & Young Club or the Boone & Crockett Club.
- 2. Completed Fair Chase Affidavit.**
- 3. Three photos of antlers, horns, or skull** (a view from the front side, a view from the left side and a view from the right side). A field photo is also requested, if possible.
- 4. \$25.00 recording fee** (made payable to the Pope and Young Club)

Drying Period: To be eligible for entry in the Pope & Young Records, a trophy must first have been stored under normal room temperature and humidity for at least 60 days after date of kill. No trophy will be considered which has been altered in any way from its natural state.